



Manufacturer: Lightel
Product Name: Lightel DI-1000 400x Digital USB Inspection Probe
Manufacturer Part Number: DI-1000-B2

▶ Click here for more details on the Lightel DI-1000 400x Digital USB Inspection Probe

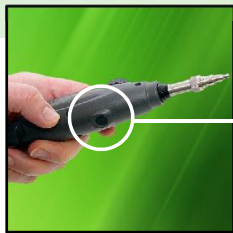
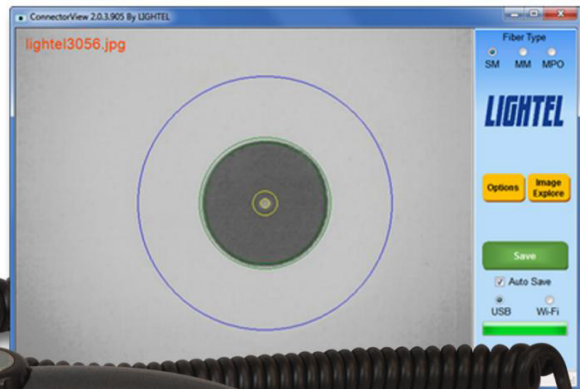


Video microscope for fiberoptic connector inspection

The ergonomically-designed DI-1000 connects directly to your PC through the computer's USB2.0 port. Powered by the USB connection, it features easy single finger focusing, a built-in image freeze/capture button, and detectable resolution to 0.5µm.

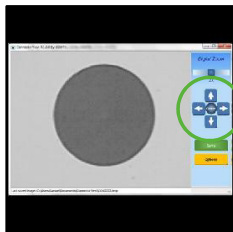
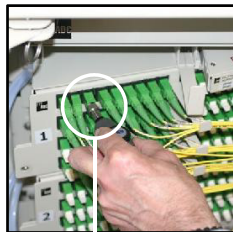
The DI-1000 includes our free ConnectorView (standard) software, providing image display, image capture, digital zoom, and basic analysis tools.

Pass/Fail analysis and reporting features can be added with our optional ConnectorView Plus software.



Features

- Convenient image capture button
- Connect to your smartphone with the optional DI-1000-WIFI adapter
- Digital zoom
- Inspect patchcord and adapter bulkhead connectors



Contact the professionals at Fiber Optic Center for a quote or to get more details.

focenter.com • 508-992-6464 | (800) 473-4237 • sales@focenter.com

23 Centre Street • New Bedford, MA 02740 USA

Product specifications and data are subject to change without notice.

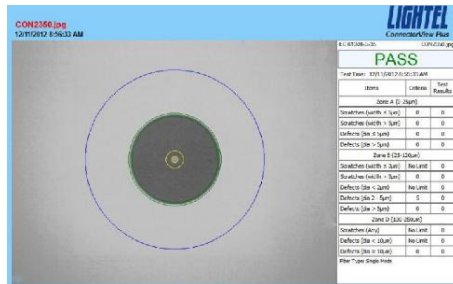


Manufacturer:
Lightel

Product Name:
Lightel DI-1000 400x Digital USB Inspection Probe

Manufacturer Part Number:
DI-1000-B2

▶ [Click here for more details on the Lightel DI-1000 400x Digital USB Inspection Probe](#)



Add Pass/Fail analysis and reporting with our optional ConnectorView Plus software.

Specifications

| | |
|-----------------------|--|
| Field of View | ~425µm x 320µm |
| Resolution | 0.5µm detectable |
| Operating Temperature | 0°C to 50°C |
| Storage Temperature | -20°C to 70°C |
| Focus | Manual adjustment, 2mm max travel |
| Dimensions | 35mm diameter x 175mm length (without tip) |
| Light Source | Blue LED |
| Power Supply | USB port of PC |

Ordering Information

| Package | Part Number | Description |
|----------------|----------------|---|
| DI-1000-B2 | DI-1000 | (1) USB2.0 digital inspection probe |
| | PT2-U2.5/PC/M | (1) Series 2 universal tip for 2.5mm male PC type connectors |
| | PT2-U1.25/PC/M | (1) Series 2 universal tip for 1.25mm male PC type connectors |
| | PT2-FS/PC/F | (1) Series 2 tip for SC and FC female PC type connectors |
| | PT2-LC/PC/F | (1) Series 2 tip for LC female PC type connectors |
| | DI1-CASE-S | (1) Soft carrying case for DI-1000 |
| | CVF-CD | (1) ConnectorView (standard) software, CD and manual |
| DI-1000-B2/APC | DI-1000 | (1) USB2.0 digital inspection probe |
| | PT2-U2.5/APC/M | (1) Series 2 universal tip for 2.5mm male APC type connectors |
| | PT2-FS/APC/F | (1) Series 2 tip for SC and FC female APC type connectors |
| | DI1-CASE-S | (1) Soft carrying case for DI-1000 |
| | CVF-CD | (1) ConnectorView (standard) software, CD and manual |

Contact the professionals at Fiber Optic Center for a quote or to get more details.

focenter.com • 508-992-6464 | (800) 473-4237 • sales@focenter.com

23 Centre Street • New Bedford, MA 02740 USA

Product specifications and data are subject to change without notice.