



**Manufacturer:**  
Seikoh Giken

**Product Name:**  
Seikoh Giken SFP-560A One-Lever MT Ferrule Holder (12)

**Manufacturer Part Number:**  
PH55-MT-12SQ1

▶ [Click here for more details on the Seikoh Giken SFP-560A One-Lever MT Ferrule Holder \(12\)](#)



**One Lever Action MT Holders *New***

**For SFP-550 series and SFP-560A**

- PH55-MT-24SQ1-B (MT/PC, 24-axis)
- PH55-MT-12SQ1-B (MT/PC, 12-axis)
- PH55-MT8A-24SQ1-B (MT/APC, 24-axis)
- PH55-MT8A-12SQ1-B (MT/APC, 12-axis)

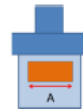
**For SFP-510 series**

- PH51-MT-20SQ1-B (MT/PC, 20-axis)
- PH51-MT-12SQ1-B (MT/PC, 12-axis)
- PH51-MT8A-20SQ1-B (MT/APC, 20-axis)
- PH51-MT8A-12SQ1-B (MT/APC, 12-axis)



To install just simply lock down the lever after inserting MT ferrule

Note: MT ferrule epoxy window width (A) shall be less than 3.4mm



**■ Features**

- No more use of torque wrench for MT ferrule installation
- Only one lever action to install and detach MT ferrule  
(Pat. JP6192797 CN108367408 Other areas Pat. Pending)
- Approx. 30% reduction in loading and unloading time
- Fully compatible with existing polishing machines
- Stable and flat geometry performance
- Simple 5 steps flock polishing process
- Various optional cable managements are available

**Contact the professionals at Fiber Optic Center for a quote or to get more details.**

[focenter.com](http://focenter.com) • 508-992-6464 | (800) 473-4237 • [sales@focenter.com](mailto:sales@focenter.com)  
23 Centre Street • New Bedford, MA 02740 USA

*Product specifications and data are subject to change without notice.*



**Manufacturer:**  
Seikoh Giken

**Product Name:**  
Seikoh Giken SFP-560A One-Lever MT Ferrule Holder (12)

**Manufacturer Part Number:**  
PH55-MT-12SQ1

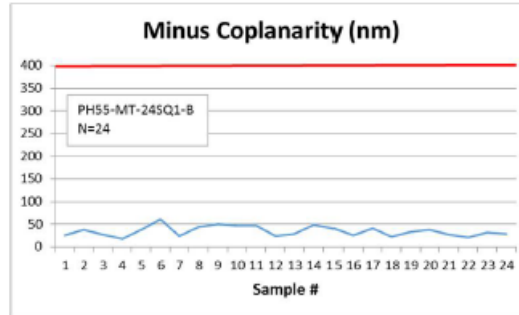
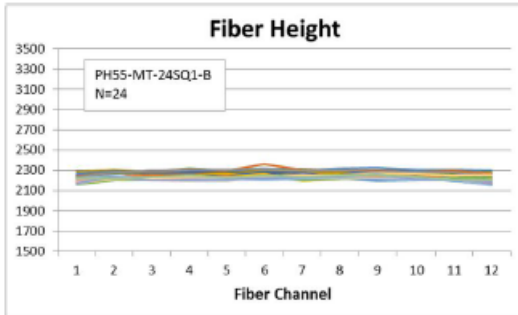
▶ Click here for more details on the Seikoh Giken SFP-560A One-Lever MT Ferrule Holder (12)

■ **Process and Performance**

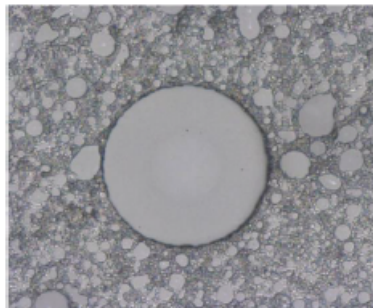
**Simple 5 steps Flock Process (M/M, PPS) (SFP-560A)**

Polishing Step	Polishing Condition					
	Polishing Pad	Polishing Film (service life)	Polishing Liquid	Polishing Time (sec)	Pressure(N) (*1)	1st Step Mode
1	PG5X-490-SR3	GC5D (1)	PURIFIED WATER	30(*2)	31 / 12-axis 62 / 24-axis	Pressure Ramp UP
2				10	31 / 12-axis 62 / 24-axis	N/A
3	PG5X-490-SR3	AR5D (1)	PURIFIED WATER	60	42 / 12-axis 84 / 24-axis	N/A
4	PG5X-490-SR3	GH5D (1)	PURIFIED WATER	60	42 / 12-axis 84 / 24-axis	N/A
5	PG5X-490-SR3	FM5D-SOAP (1)	PURIFIED WATER	150	42 / 12-axis 84 / 24-axis	N/A

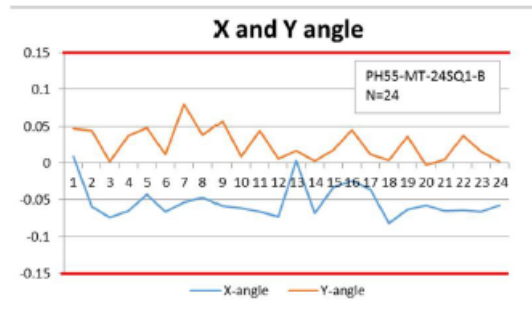
**Stable Fiber Height**



**Clean Endface**



**Stable Angle**



Disclaimer- 1) Polishing method with use of fibrous material is patented in the U.S (US patent No. 6106368). 2) A ferrule assembly with fiber protrusion between 0.5um and 2.5um after polishing is patented in the U.S. (US patent No. 5743785).

Contact the professionals at Fiber Optic Center for a quote or to get more details.

[focenter.com](http://focenter.com) • 508-992-6464 | (800) 473-4237 • [sales@focenter.com](mailto:sales@focenter.com)

23 Centre Street • New Bedford, MA 02740 USA

Product specifications and data are subject to change without notice.